

## DC Virtual Panels Installation Guide

### *System requirements:*

**Operating System:** Microsoft Windows<sup>®</sup> 7/8/8.1/10  
**CPU:** Intel<sup>®</sup> Core™ i3 or higher  
**RAM:** 4GB or higher  
**Free Disk Space:** 1GB (For full installation including drivers)  
**Connectivity:** Ethernet 100Base T, RS232, GPIB

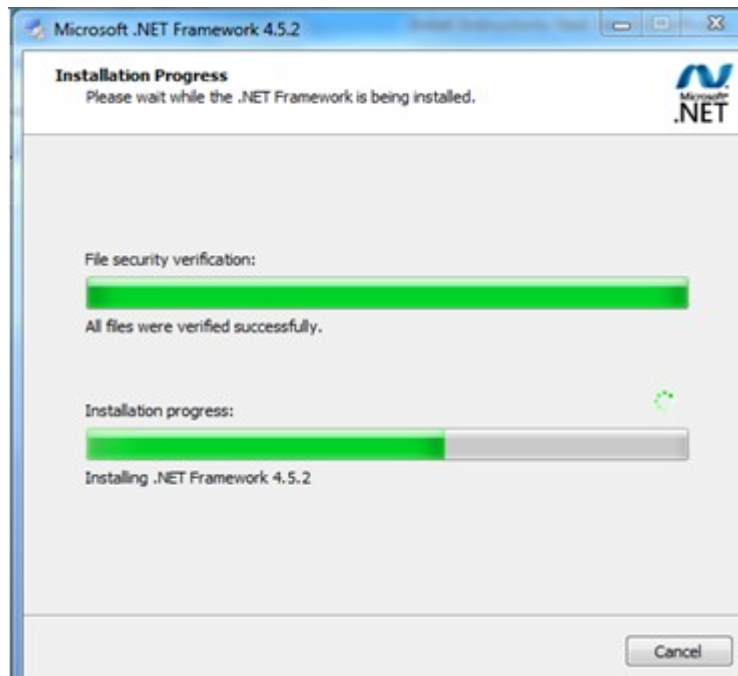
### *Pre-Requisites Software:*

.NET Framework 4.5 or later  
National Instruments<sup>®</sup> NI VISA Runtime Engine Software Version 17 or higher  
National Instruments<sup>®</sup> NI-488.2 Driver v14.0 or higher (**Only required if using GPIB**)

## *DC Virtual Panels Installation Instructions*

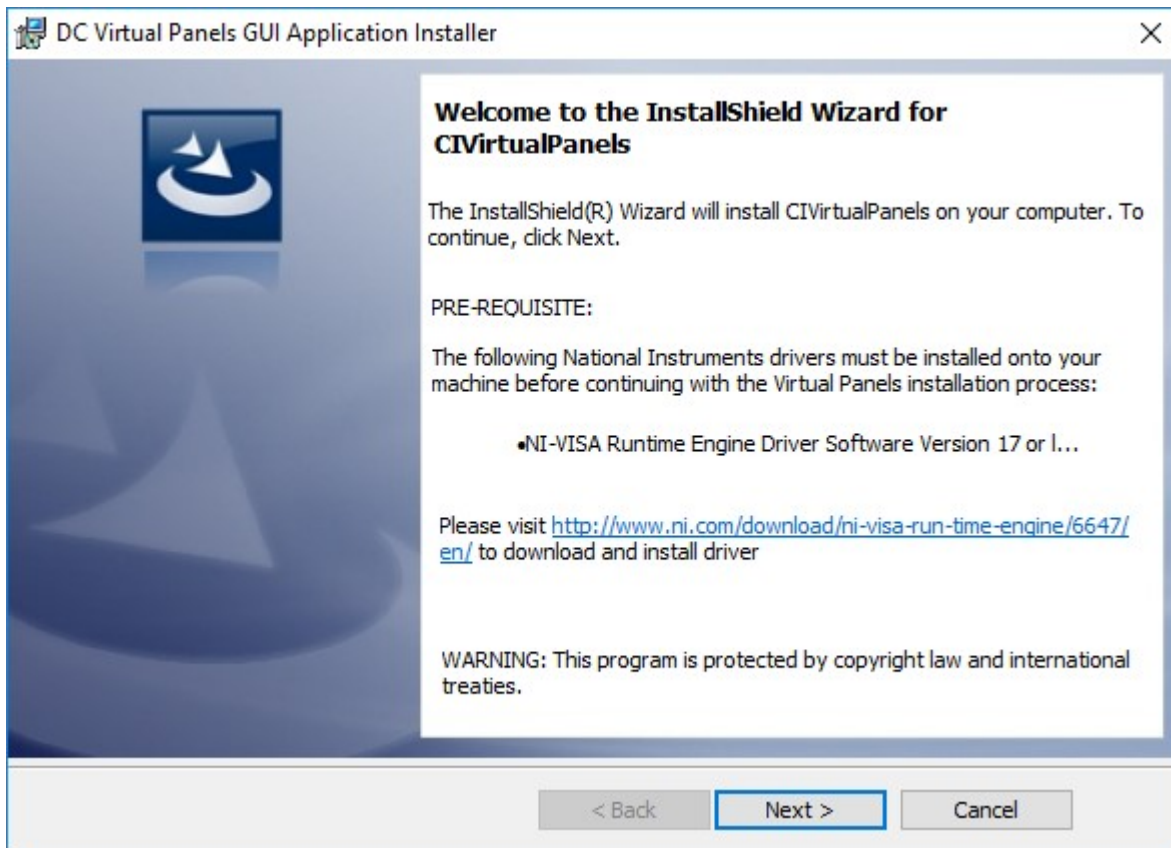
**IMPORTANT NOTE:** If any previous version of DC Virtual Panels is already installed in your system. This must be uninstalled first before continuing with the installation guide.

1. Run the DC Virtual Panels Installer. If .NET Framework 4.5.2 is not installed a message window will appear prompting to install the Dot Net Framework. Click Install.

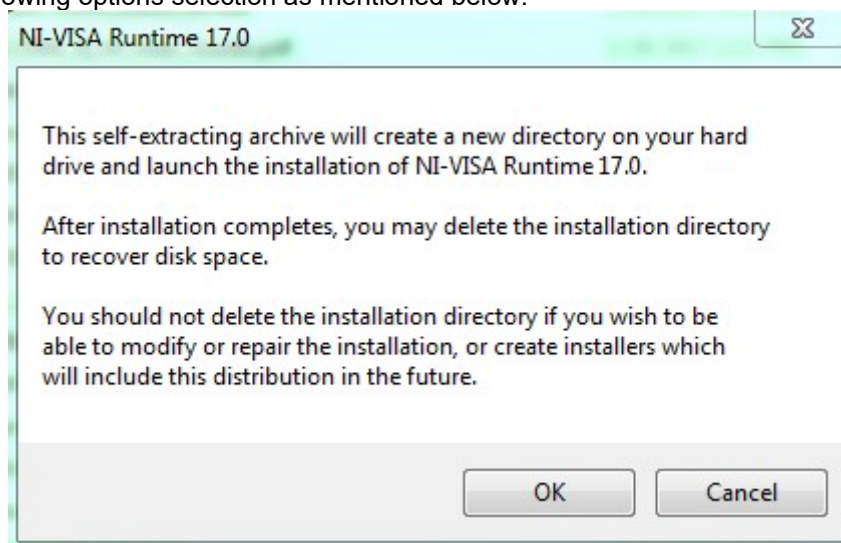


2. After successfully installing .NET Framework 4.5.2. The installer will automatically close. Reopen DC Virtual Panel installer and click the link <http://www.ni.com/download/ni-visa-run-time-engine/6647/en/> to download NI-VISA Runtime Engine Software Version 17 or later as seen in the image below.

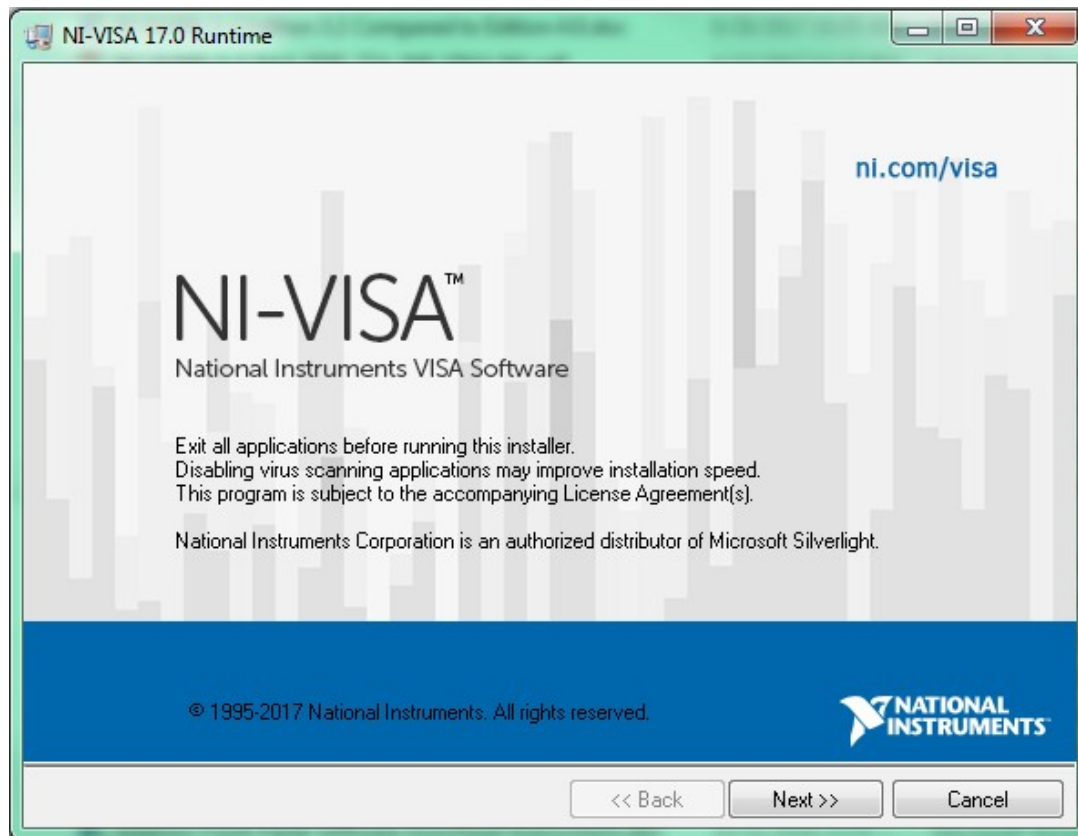
**IMPORTANT NOTE:** To download NI software a National Instrument account is needed. It is free to create an account. NI VISA Runtime Engine Software Version 17 is approximately 123mb.



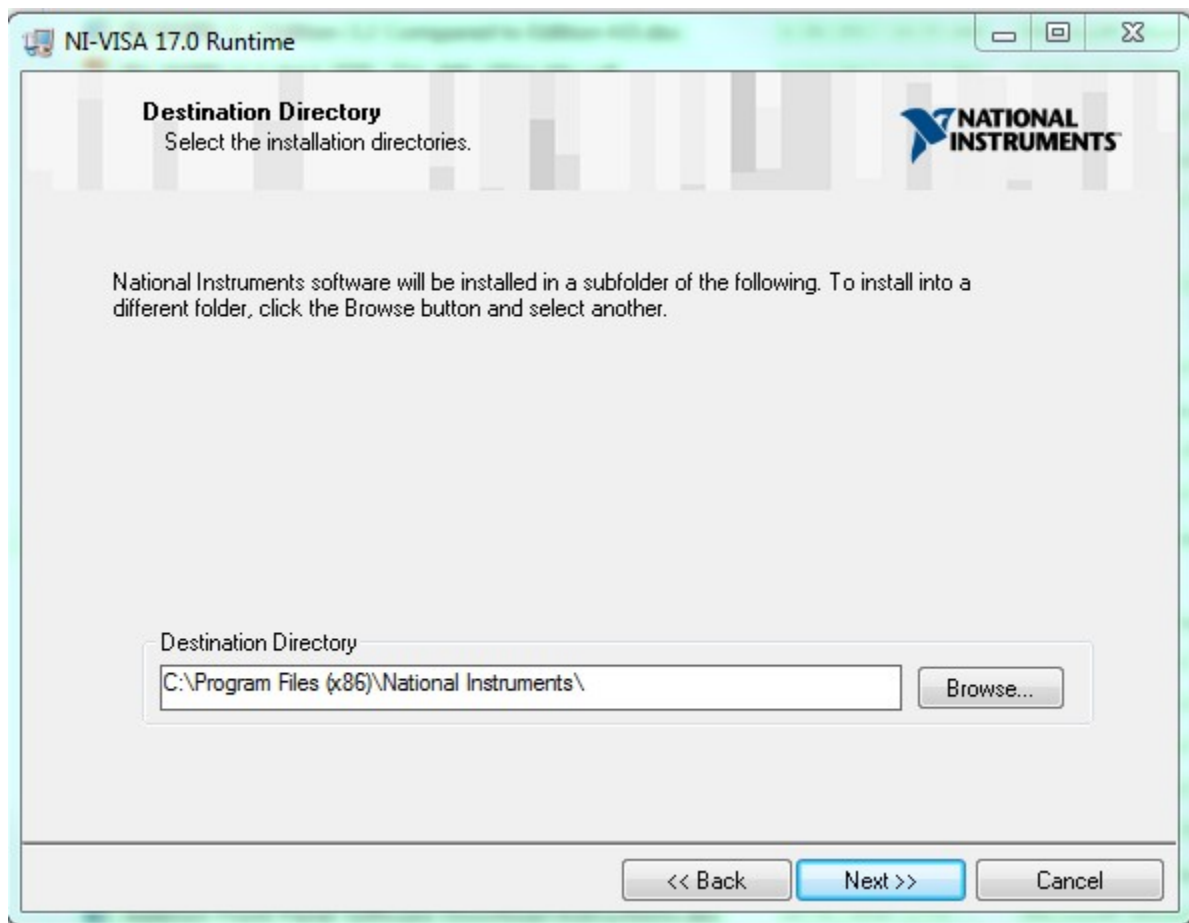
3. After downloading NI-VISA Runtime Engine Software Version 17 or later. Continue to self-extract and install the software with the following options selection as mentioned below.



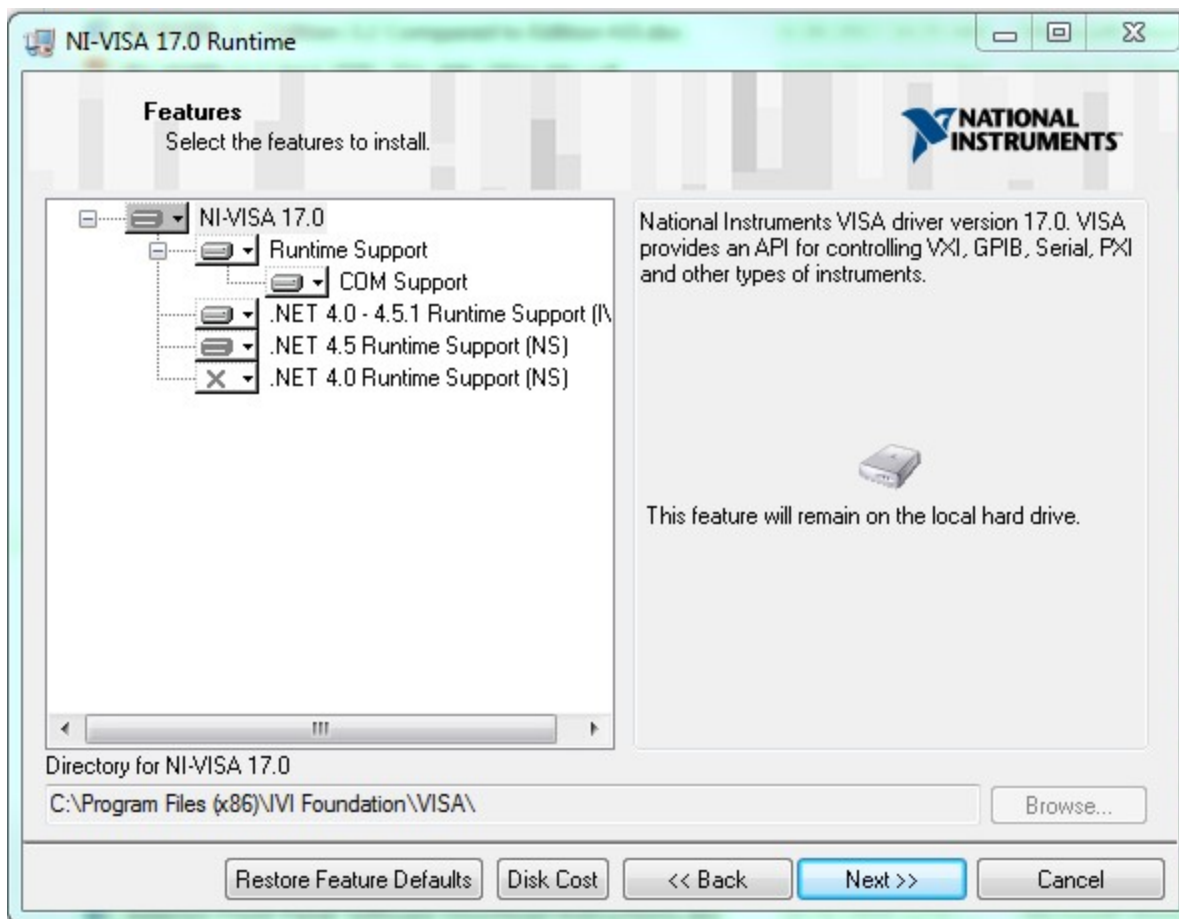
NI-VISA shall act as a common interface between the Power Device and development environments (GUI applications) to support GPIB, Serial, Ethernet and USB.



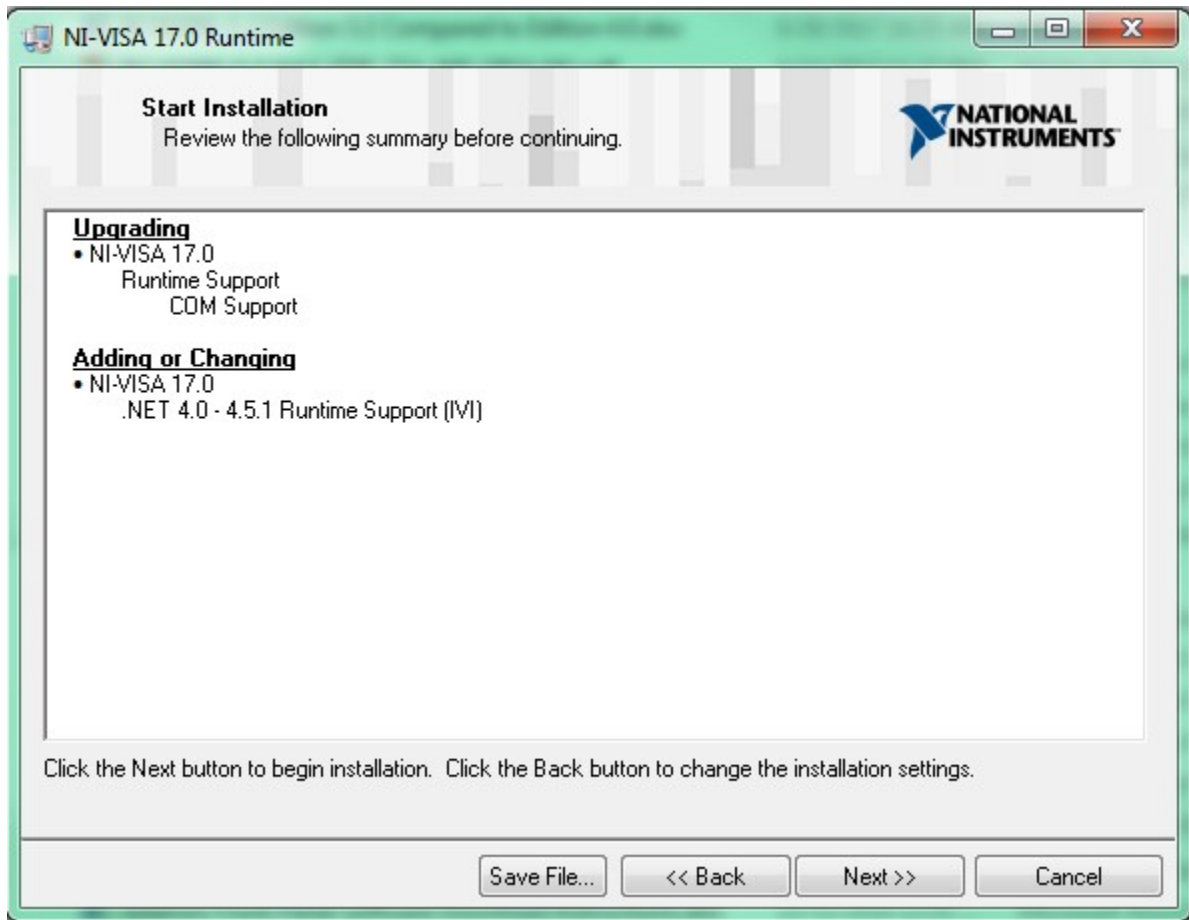
Leave Destination Directory at its default location. Click “Next”. See image below.



Leave all features installed at their default settings. Click “Next”. See image below.

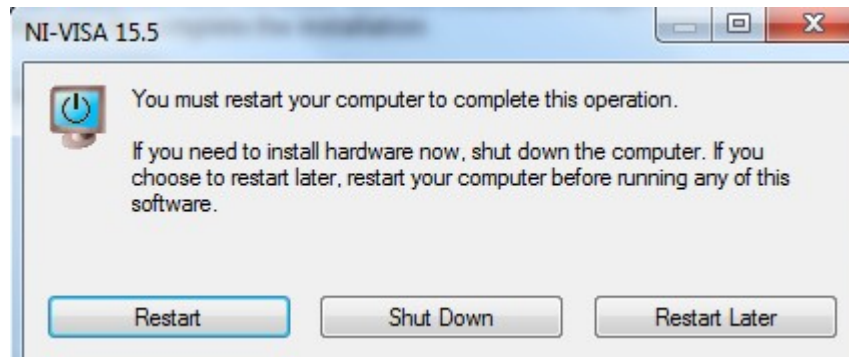


The summary information page is as shown below. Verify and click next to proceed further



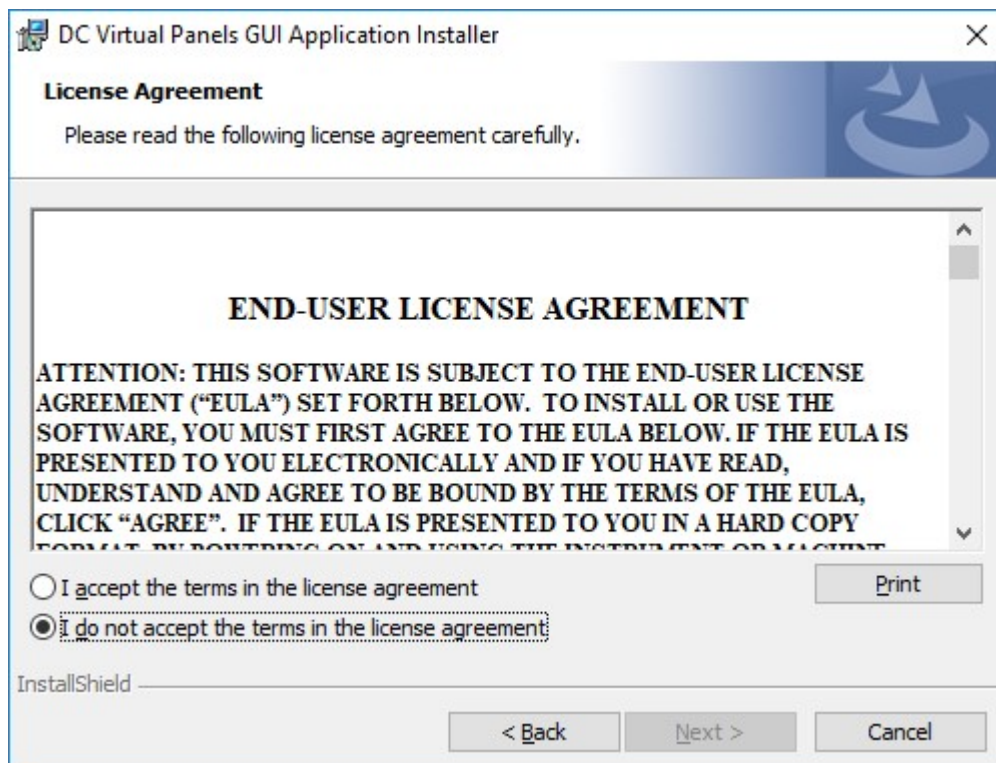
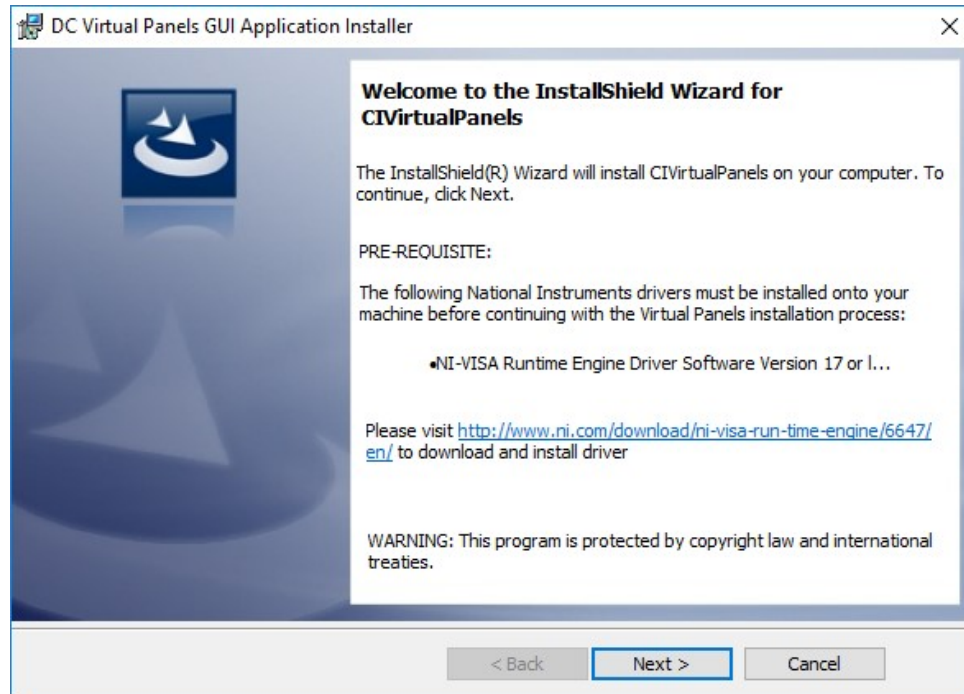
Click next and continue with the installation steps with other default selections. It shall take few minutes to complete the installation.

Once the NI-VISA 17.0 Runtime installation is complete, it prompts user for restarting your computer. Please click restart button to re-start the system.

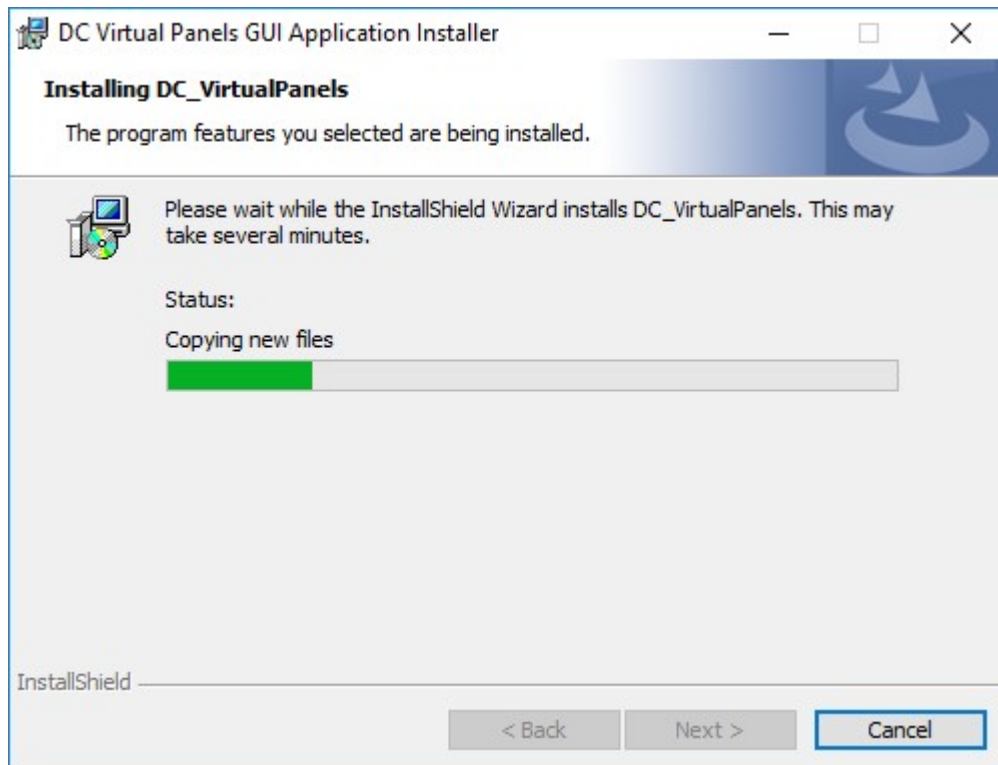




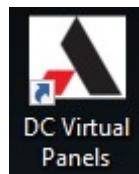
- After restarting computer rerun the DC Virtual Panel Installer and continue with installation steps.



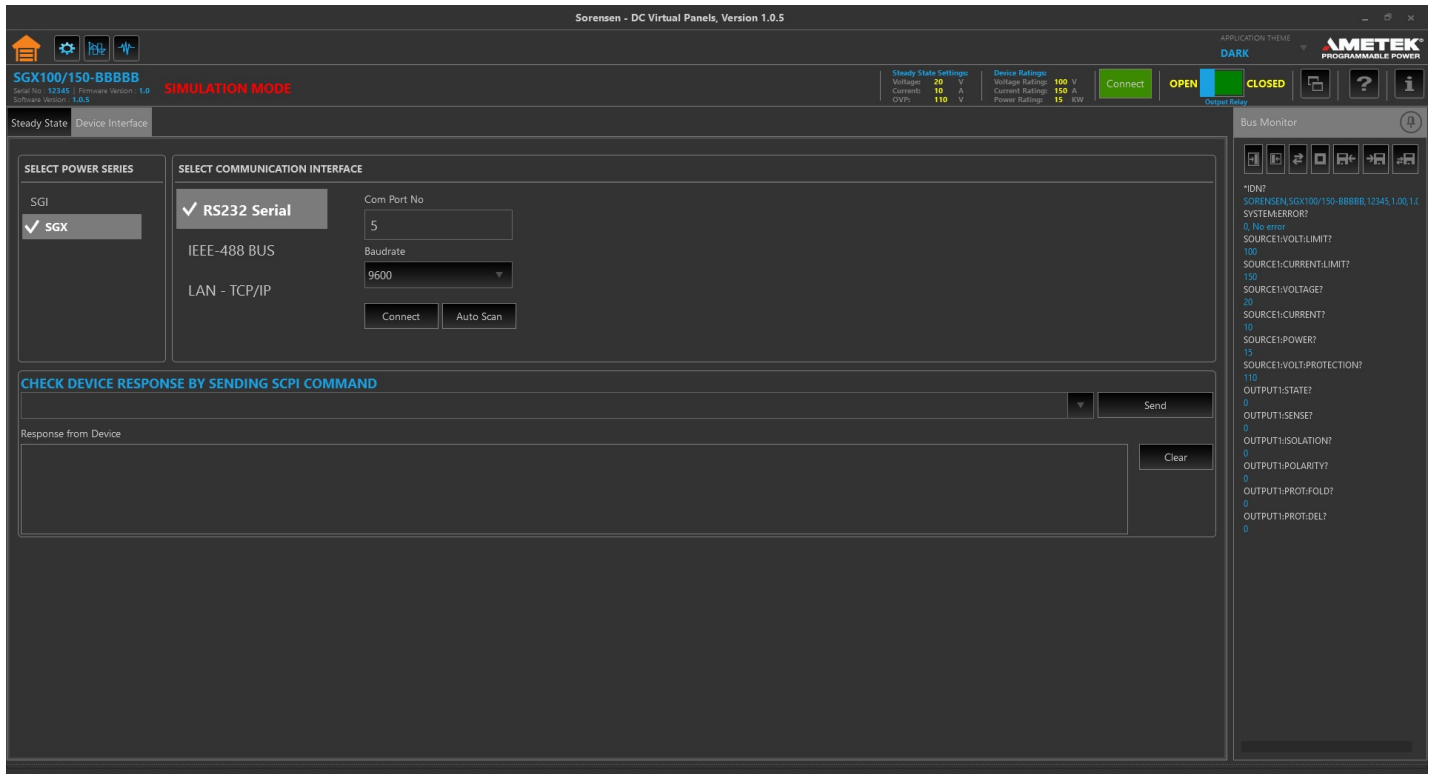




After completing installation, launch the DC Virtual Panels by clicking on the icon provided on the desktop.



Launching the application for the first time may take some time to come up. Please wait until application screen appears.



Installation Complete.

## *Silent/Unattended Virtual Panels Installation Procedure*

Virtual Panels GUI Installation can be automated using command line or through running a batch file with the following command switches.

**IMPORTANT NOTE:** Make sure to run Command Prompt(cmd.exe) as Administrator before proceeding with sending the command line installation.

**Step1:** Following is the command line switch to silently install the NI-VISA Runtime engine. The extracted files of NI-VISA Runtime need to be present in the local folder to follow this procedure.

**"<PATH\_OF\_NIVISA\_RUNTIME\_ENGINE\_SETUP\_EXE>" /q /AcceptLicenses yes /r:n**

In the above command, the first section is path of the NIVISA Runtime setup.exe located in the local folder

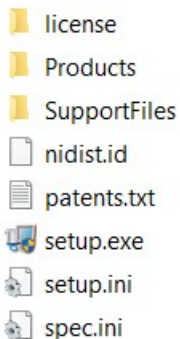
Example: **"E:\NIVISARuntime\setup.exe" /q /AcceptLicenses yes /r:n**

**Command Line for Silent/Unattended install (with basic progress bar UI) respectively are as follows:**

**"<PATH\_OF\_NIVISA\_RUNTIME\_ENGINE\_SETUP\_EXE>" /qb /AcceptLicenses yes /r:n**

In the above command, the first section is path of the NIVISA Runtime setup.exe located in the local folder

Example: **"E:\NIVISARuntime\setup.exe" /qb /AcceptLicenses yes /r:n**



*Screen shot of NI VISA Runtime extracted files list*

**Step2:** Following is the command line switch to silently install the Virtual Panels GUI located in the local folder.

**msiexec /i "<PATH\_OF\_DC\_VIRTUAL\_PANELS\_GUI\_MSI>" /qn /norestart**

In the above command, the first section is path of Virtual Panels GUI "CI\_VirtualPanels.msi", located in the local folder

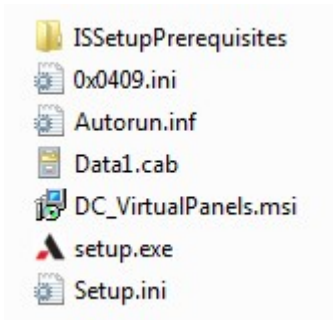
Example: **msiexec /i "E:\DC\_VirtualPanels\_Ver1\_0\_5\_Signed\DISK1\DC\_VirtualPanels.msi" /qn /norestart**

Command Line for Silent/Unattended install (with basic progress bar UI) respectively are as follows:

**msiexec /i "<PATH\_OF\_DC\_VIRTUAL\_PANELS\_GUI\_MSI>" /passive /norestart**

In the above command, the first section is path of Virtual Panels GUI "CI\_VirtualPanels.msi", located in the local folder

Example: **msiexec /i "E:\DC\_VirtualPanels\_1\_0\_5\_Signed\DISK1\DC\_VirtualPanels.msi" /passive /norestart**



*Screen shot of Virtual Panels GUI file list*

## ***Silent/Unattended Virtual Panels Uninstallation Procedure***

Command Line for Silent/Unattended uninstall (with basic progress bar UI) respectively are as follows:

**msiexec /uninstall {B06EB587-F825-408F-92A9-26833B1F1B11} /passive /norestart**

Command Line for Silent/Unattended uninstall and install (without any progress bar UI) respectively are as follows:

**msiexec /uninstall {B06EB587-F825-408F-92A9-26833B1F1B11} /qn /norestart**

---

## Technical Support for DC Virtual Panels

For technical support or to report bugs and feedback, please contact AMETEK Programmable Power at:

Email: [ci.ppd@ametek.com](mailto:ci.ppd@ametek.com)

URL: [http://www.programmablepower.com/support/support\\_Sorensen.htm](http://www.programmablepower.com/support/support_Sorensen.htm)

Telephone: +1.858.450.0085

Updated: 06 June 2018